

VerySOFT & VerySOFT Deep Leg Troughs



GELfoam Layers



Contour Shape

Composition

- Layers of *GELfoam* (VerySOFT gel infused memory foam) regulate temperature and relieve pressure
- Cushion ensures structural integrity
- Promotes postural stability
- Front profile increases comfort
- Includes 2 incontinent covers
 - Option of *Dry N' Cool* or *Wipe N' Dry* cover systems

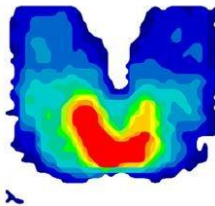
Benefits

- *GELfoam*
 - Facilitates immersion
 - Significantly reduces pressure
 - Prevents heat buildup
 - Protects and maintains user's skin integrity
- Contours promote postural stability and correct positioning
- *VerySOFT-DLT* cushions enhance positioning support
- Cushions supports self-propulsion
- Maintenance free and caregiver friendly cushions

Application

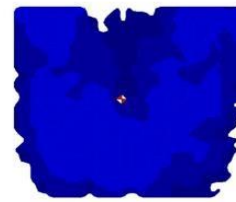
- Ideal for users that require moderate to high pressure redistribution
 - Appropriate for non-weight bearing users
 - Day long sitting, 8+ hours/day
- Designed for users that need a soft and supportive cushion
- Provides postural stability
- *VerySOFT-DLT* cushion aids in achieving seat-to-floor height
- Customizable in shape and size to accommodate varying needs, including leg length discrepancies, pelvic obliquities, etc.

Pressure Mapping of the *VerySOFT* Cushion



User on wheelchair sling upholstery

The red segment indicates a dangerous pressure area of 400mmHg



User sitting on *VerySOFT* cushion

The blue segments indicate safe pressure levels of 30mmHg